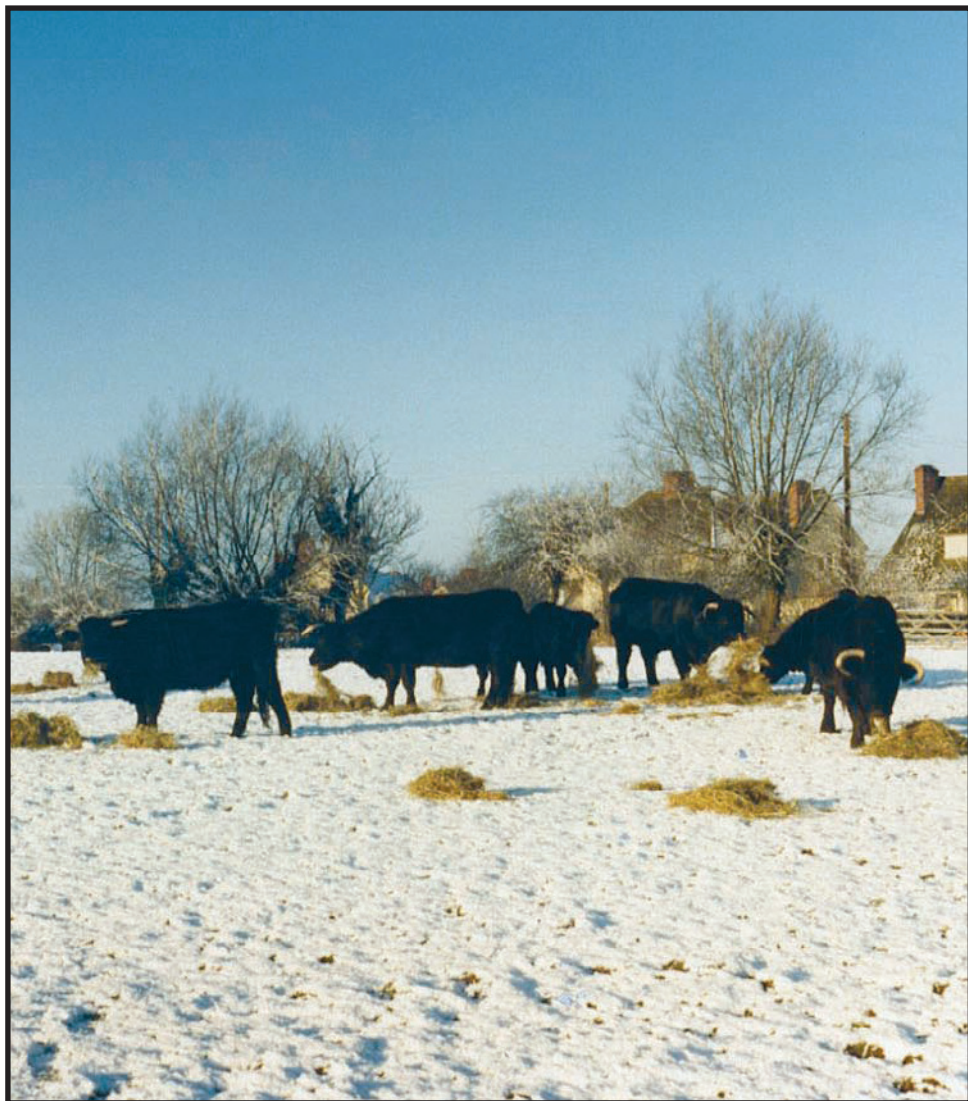


# GREAT MILTON BULLETIN

February 2016

Published by the Parish Council

No. 506



## Great Milton Parish Council

<b>Chairman:</b>	<b>Stephen Harrod</b>	<b>01844 278068</b>
Ward:	Church Road to Monkerly Farm/The Priory	
<b>Vice Chairman:</b>	<b>Peter Fewell</b>	<b>01844 279400</b>
Ward:	The Green from Priory Bank to Tara/Applewood	
<b>Councillor:</b>	<b>Bill Fox</b>	<b>01844 279716</b>
Ward:	Thame Road, inc Fullers Field and Green Hitchings	
<b>Councillor:</b>	<b>Rosalind Deacon</b>	<b>01844 278554</b>
Ward:	High Street from North End Cottage to The Old Garage	
<b>Councillor:</b>	<b>Vacancy</b>	<b>—</b>
Ward:	Thame Road from Green Hitchings to A329	
<b>Councillor:</b>	<b>Gwen Harris</b>	
Ward:	Kings Head House/Red Roofs to Wheatley Boundary	
<b>Councillor:</b>	<b>Peter Allen</b>	<b>01844 278334</b>
Ward:	Milton Common	

**Clerk/Responsible Financial Officer: Helen Cherry – 07554 516989**

21 Fullers Field, Great Milton, Oxford OX44 7PJ.

**contact@clerkgreatmilton.co.uk**

### Parish Council Representatives

Rec Ground Committee:	Michael Robinson, Michele Block
Old Field Charity:	Hazel Hand, Niki Patrick
Hard Surface Play Area:	Susan Read, Jon Devitt
Neighbourhood Watch:	Lesley Bush, Liz Sands
Kent & Couling Charity:	Cynthia D'Anger
Sheppard Trust:	Ann Price, Pat Cox

### Parish Council Publication Scheme (*Freedom of Information Act*)

Residents of the Parish can see the records of the Council held by the Parish Clerk or learn where they may be accessed. These records include minutes, financial information, and responses to planning consultations. Applications can be made to the Parish Clerk and documents viewed by appointment. Any copies required will be charged at 10p per page.

### Front Cover

Welsh Blacks out wintering at Coombe Farm, early 1980s.

**If you have any photos of the village or events, we would love to include them!**

## In My Opinion...

How quickly can a Parish Council make a U-turn? Quite quickly is the answer! Following feedback from residents, the PC has revised its decision to reduce the number of Bulletins to every second month and we will continue to publish this on a monthly basis for the foreseeable future. I was in any event incorrect in saying that the January edition would be the last monthly one as this would only have come into play from the new financial year in April. Either way, it's not going to happen now! We will endeavour to keep costs down and intend to reduce the print run to a minimum by not printing as many extra copies as in the past, and only distributing to parish residents, with a few extras to be held in the shop. In my opinion, this will enable us to stay in budget this year, with some reserves available for emergency funding should we need them. Be prepared for a hike in the precept in April 2017 though! We will also be looking for sponsorship of the colour cover from a generous and philanthropic advertiser. Watch this space...



In other news, there has been a flood of objections from our neighbouring parish, Tetsworth, relating to a proposal for a new travellers site between Milton Common and Tetsworth. This application will be determined in the next month so watch this space also!

One last point is the safety of the children who walk to the bus stops on Thame Road for school in the dark in the mornings, and potentially those who are still coming home in the dark. The majority of these children are wearing dark/black clothes with no reflective qualities at all and they are extremely hard to see when they are walking along the roadside. They also seem unaware of the cars around them since possibly they are listening to music, etc. Cllr Roz Deacon points out that they should be encouraged to:

- 1) walk on the correct side of the road,
- 2) wear some sort of reflective clothing,
- 3) be aware of the traffic around them.

I know it's not cool but it might make them much more visible and hence safer. Don't let apathy get to us!

*Stephen Harrod*

Chairman

## **Parish Council Notes**

The January meeting of Great Milton Parish Council was chaired by Cllr Stephen Harrod (Chair & District Councillor), Cllrs Peter Allen, Rosalind Deacon, Peter Fewell and Gwen Harris in attendance. Also present were Helen Cherry (Clerk) and three members of the public. Apologies were received from Bill Fox. The next meeting will be held on Monday 15th February at 7.30pm in the Pavilion.

### **Planning Applications**

Great Milton Parish Council recommended NO STRONG VIEWS

Application Reference: P15/S4047/HH (Householder)

Application Type (see definition over) : Other

Amendment : No. 1 - dated 8th January 2016

Proposal : Single and two storey rear extensions and new porch (as amended by plans received 8 January 2016, altering design of roof to a hip end)

Address : 2 Thame Road Great Milton OX44 7HY

Great Milton Parish Council recommended APPROVAL of:

Application Reference: P15/S4075/HH (Householder)

Application Type (see definition over): Other

Proposal: Proposed single storey rear extension, replacement of existing two storey rear extension flat roof with pitched roof and erection of a replacement outbuilding.  
Address: Pitts Cottage Lower End Great Milton OX44 7NF

### **Correspondence and Public Discussion**

#### **History Society – Village archive**

The History Society looks after the Village archive within the Community room at the Bull. The Parish Council, at the time of setting up the Community Pub, allocated this room to house their own records and offered the remaining space to house the Village archive. For the past 2 years, the History Society has contributed £100 towards heating and light, but their resources are limited. Great Milton Parish Council would like to contribute towards costs and will liaise with the History Society accordingly.

#### **Bulletin Production**

The Chair and clerk received several correspondences from residents with regard to cutting the bulletin production to every two months. After discussing this further it was RESOLVED to continue with bulletin production on a monthly basis and distribute to residents within the parish only. Remaining copies will be placed in Great Milton Shop.

## **Subsidised bus service 103/104**

It was RESOLVED that Cllr Fewell would join the Transport Group as Great Milton Parish Council (GMPC) representative.

*Helen Cherry, Clerk to Great Milton Parish Council*

---

## **District Council News**

### **We're number one!**

It's official - residents of South and Vale continue to be the best in the country at recycling. According to official DEFRA figures, South Oxfordshire sits at the top of the chart for 2014/15 with a 67.3 per cent recycling rate, with the Vale just below in second place with 65.6 per cent, it's the third year running both districts have been in the top three.

Whilst this is good news, we are currently very concerned about the amount of food waste and nappies currently ending up in recycling bins. New legislation means recycling contaminated in this way has to be sent to landfill and this could have a serious impact on our recycling rates.

### **Planning Enquiries**

If you have a planning issue you want us to look into please, in the first instance, get in touch with our Customer Service Team. They are the quickest and easiest route to getting your questions answered.

You can get in touch with them on 01265 540546 or via email to: [planning@southoxon.gov.uk](mailto:planning@southoxon.gov.uk) or [planning@whitehorsedc.gov.uk](mailto:planning@whitehorsedc.gov.uk)

### **Winter Weather**

To help people prepare for the inevitable rain, wind and snow this winter we've updated the advice on our South and Vale severe weather pages:

<http://tinyurl.com/gpvzsn8> and <http://tinyurl.com/hc9gudk>


The county council has also produced a Winter guide, which you can see at:

<http://winter.oxfordshire.gov.uk/cms/content/winter-guide>

### **Gold is Go**

We've launched Go Active Gold, our project to help people over the age of 60 in rural areas become more active. You can check out the launch video:

<https://www.youtube.com/watch?v=I8cME0M1dtc>

We'll shortly be announcing full details of the first activities on offer. In the meantime, if you know anyone who might be interested in volunteering to help set up activities or spread the word please encourage them to get in touch with our 

Go Active Gold Activator Annalie Thomasson via [Annalie.Thomasson@southandvale.gov.uk](mailto:Annalie.Thomasson@southandvale.gov.uk) or 07766991487.

### **Police Counter Closures**

As part of its aim to save £29 million by 2021 Thames Valley Police is proposing to close front counters at a number of police stations across the county including

at Didcot, Faringdon, Henley, Thame, Wantage and Wallingford. For more information please see TVP's statement: <http://tinyurl.com/hntjcyg>

Please don't hesitate to contact me if you need any further information on any of these items, or indeed any issues not addressed here.

Kind regards

*Steve Harrod, District Councillor, Haseley Brook Ward*

M: 07944 077 209 • T: 01844 278 068 • E: [Stephen.Harrod@southoxon.gov.uk](mailto:Stephen.Harrod@southoxon.gov.uk)

---

## **County Council News**

### **Local Government Settlement**

Oxfordshire County Council has now received details of future grant funding from central Government and the levels are even worse than feared. The council had been preparing for up to £50m of savings from 2016 to 2020 (on top of the £292m it is already in the process of making for the period from 2010 to 2018). However, on the basis of figures provided by central Government last month, OCC will have to make £20m further savings on top of the £50m, bringing the total saving to £70m over the next four years. Central Government has changed the formula for funding councils, and it seems shire counties, particularly in the south of England, have come off worst.

The list of proposed savings for £50 million was already controversial, with many members of the public opposing them. To achieve the additional £20 million savings, no area of the council can be exempt other than those where there is a statutory obligation to provide for the most vulnerable in the county. This means other areas will suffer disproportionately, which will involve some very difficult and controversial decisions. By law, the Council has to pass a balanced budget with no revenue borrowing. The Cabinet recommendations will be published 18th January for decision 26th January, before the budget goes to Full Council on 16th February.

### **Devolution**

OCC Leader Ian Hudspeth, District Leaders, LEP representatives and health colleagues attended a meeting with the Secretary of State in December to put forward the case for Oxfordshire devolution. The meeting was very positive, however Government



has not yet said what it will ask for or offer. Any move towards a Combined Authority is very much dependent on this and will be preceded by a governance review. All aspects of the offer and governance have to be agreed by each individual council before a Combined Authority can be created.

### **New Oxfordshire Libraries App**

Oxfordshire Libraries can now be accessed from smart phone or tablet. People can:

- manage their account
- search the catalogue
- renew and reserve books.

Bar code scanning is available on devices with a front-facing auto-focus camera.

Search for 'Oxfordshire Libraries' at the App Store or Google Play.

### **Applications Deadline for Primary School Places**

Families with children due to start primary school this year are being urged to ensure they don't miss the 15 January applications deadline.

Parents or carers of children born between 1 September 2011 and 31 August 2012 should visit the primary school admissions pages and apply online where possible.

Primary or junior school applications also need to be made for children currently attending an infant school who were born between 1 September 2008 and 31 August 2009.

### **County's Youngsters Improve in Core Subjects**

Oxfordshire's eleven-year-olds have surged ahead in reading, writing and maths tests, according to the latest figures.

The proportion of the county's pupils reaching Level 4+ in all three core subjects at Key Stage Two increased to 81 per cent in 2015 – up from 79 per cent last year.

It means the county has moved above the national average of 80% on this measure. The proportion of children making expected progress between the ages of seven and eleven is also higher than the national average for reading and writing, and in line for maths.

The recent Oxfordshire Reading Campaign, backed by the Oxford Mail and delivered by the National Literacy Trust, helped targeted primary schools make significant improvements in literacy attainment at Key Stage One and Two in recent years – with many schools intending to carry on using the programme.

Melinda Tilley, OCC's Cabinet Member for Children, Education and Families, said: "This campaign work has helped create and sustain a real culture of reading and writing in participating schools, and I think it's fair to say we are seeing this reflected in these improving results."

### **Temporary New Home for Oxford Central Library**

Continuing work to transform the Westgate Shopping Centre in Oxford



is to lead to the County Council's Central Library temporarily moving to a nearby location.

Redevelopment work at Westgate Oxford includes the complete transformation of the front of the current library building.

The existing frontage of the Central Library will be replaced to become part of the new curving wall forming the south side of Bonn Square marking the entrance to the new Westgate Oxford.

Once complete, the new Oxford Central Library, as part of the Westgate Oxford redevelopment, will feature a new entrance foyer, refurbished and extended children's library and new feature windows with views over Bonn Square and Castle Street.

While this work takes place, Oxfordshire County Council and the Westgate Oxford Alliance are working together to achieve a suitable relocation for the Oxford Central Library so that it can continue to be available to the public. The proposed location for the temporary library is in the nearby Castle Quarter.

Current plans are for the Central Library within the existing Westgate Centre to close to the public on February 27, with the new smaller temporary library opening its doors at the nearby Castle Quarter at the end of March where it would be stationed for 18 months until the new Westgate Oxford opens in October 2017.

Facilities available to the public from the temporary library will include a collection of books, audio books and DVDs for adults and children. It is also expected that children's activities and small scale reading events will be held.

Due to the size and facilities available at the site of the temporary library at the Castle Quarter, internet access, reference information, newspapers, journals and music services will not be available. However, these services will be provided at other libraries in the area. The library service's Reference Online service and eBooks and eAudio lending services will also be available. As ever, it will be possible to renew online, through the new library app.

The period between when the existing library closes and the new, temporary library opens, will allow for staff to move the materials to the new proposed location at the Castle Quarter. During this time, all usual services will still be available across Oxfordshire's other libraries, including those in and around the city of Oxford

Councillor Lorraine Lindsay Gale, Oxfordshire County Council's Cabinet Member for Cultural and Community Services, said: "We are very excited to see the progress being made at Westgate Oxford. While this means we will need to relocate the Central Library on a temporary basis as this redevelopment work continues, we are looking forward to moving the library into its new space in October 2017.

"We are looking at plans to relocate the new temporary facility to the nearby historic



Oxford Castle Quarter. Although the temporary library will be smaller with some reduced services, I am sure it will provide an excellent environment for our library users and visitors to the city with all usual services still available across Oxfordshire's other libraries, including those in and around the city of Oxford.

"We all look forward to the Central Library reopening in 2017 and continuing to be a highly popular resource right at the heart of Oxford's city centre."

Sara Fuge, Development Manager at Westgate Oxford Alliance, said, "We'd like to thank all local residents for their patience and cooperation as the redevelopment of the city's west end continues and look forward to welcoming everyone to the new Westgate Oxford when it opens next year."

Please don't hesitate to contact me if you require any further information. Kind regards

*Stephen Harrod, County Councillor*

Chalgrove & Watlington Division, Oxfordshire County Council

M: 07944 077 209 • T: 01844 278 068 • E: [steve.harrod@oxfordshire.gov.uk](mailto:steve.harrod@oxfordshire.gov.uk)

---

## **Bus Service Proposals**

Oxfordshire County Council has facilitated meetings between bus operators and Parish |Council representatives to discuss future options for rural buses following the decision to withdraw bus subsidies. The outcome of the meeting with Heyfordian was very encouraging!

Heyfordian believe they can operate a single service covering the services for 103, 104 and 108 (Forest Hill, Beckley, Stanton St. John) without any subsidy from OCC. The exact details of how this will be achieved now need to be worked out. The service will be a circular one meaning some journeys will take longer.

The needs of the various users were fully discussed and the company is considering using a variety of buses to meet the demands at certain times of the day. The needs include those travelling to work; access to Morland House Surgery; the Cowley Centre; school children; students at CES Language School and other users. Compromises will have to be made but at least it appears that a service can be continued.

## Services in Our Benefice for February 2016

	<b>St. Mary the Virgin Great Milton</b>	<b>St. James' Little Milton</b>	<b>St. Peter's Great Haseley</b>
Sunday 7th <i>Sunday Next before Lent</i>	Holy Communion BCP 8:00am	Holy Communion CW 9:30am	Family Service 11:00am
Wednesday 10th <i>Ash Wednesday</i>	Holy Communion 7:30pm		
Sunday 14th <i>Lent 1</i>	Holy Communion CW 9:30am	Family Service 11:00am	Holy Communion BCP 8:00am
Wednesday 17th	Compline 7:30pm		
Sunday 21st <i>Lent 2</i>	Family Service 11:00am	Holy Communion CW 9:30am	
Wednesday 24th		Compline 7:30pm	
Sunday 28th <i>Lent 3</i>			Benefice Communion CW 10:00am

## Services in Our Benefice for March

	<b>St. Mary the Virgin Great Milton</b>	<b>St. James' Little Milton</b>	<b>St. Peter's Great Haseley</b>
Wednesday 2nd			Compline 7:30pm
Sunday 6th <i>Mothering Sunday</i>	Benefice Mothering Service 10:00am	Holy Communion BCP 8:00am	


## From the Rectory

We really enjoyed our first Christmas in the Villages. We had some wonderful carol services, carol singing in the Villages and school services. I loved the midnight communion at Little Milton and the Christmas morning service at Great Haseley was stunning, a packed church and a great Christmas day spirit. And we got to see the New Star Wars movie ‘The Force awakens’! A family trip out, eight of us just after Christmas. It didn’t disappoint, not at all. Without giving anything away, if you like that sort of thing it is a must see.

There was one significant sadness however, Marty will never be able to see it. Marty was Cath’s (my wife) older brother, by eleven months. He had Downs syndrome and for the past few years was also displaying signs that he was developing dementia. Cath managed to see him in Kent at the end of November for his 56th birthday. Marty died on 7th December. Marty Loved Star Wars, there was not a single social event that didn’t involve a mock light sabre fight with him. At his funeral Marty was brought into the crematorium to the Star Wars theme tune, his favoured Darth Vader Helmet was placed on his coffin. He could be infuriating, stubborn and extraordinarily fun loving in equal measure. Cath and Marty were inseparable as children and they remained close for the rest of his life.

The Day after Marty died, on the way to see the staff of the home where Marty lived and then to visit Marty at rest, we overheard a piece on the radio. The East Kent hospitals NHS Trust (co-incidentally the area where Marty lived) had apologised to the family of Andrew Waters, who had Downs Syndrome after the family had discovered the trust had placed a “do not resuscitate” order on him without consulting them. They listed his Down’s syndrome and learning difficulties among the reasons. Mr Waters has since died but his family maintain that at the time there had been nothing wrong with his health that would have had an effect on resuscitation.

A couple of days later I happened to come across reference to a tweet from Richard Dawkins back in 2014. In it, Dawkins had responded to another user who said that she would be faced with a “real ethical dilemma” if she became pregnant with a baby with Down’s syndrome. Dawkins tweeted “Abort it and try again. It would be immoral to bring it into the world if you have a choice.”

At Marty’s funeral one of Cath’s brothers Chris did the reading, her other brother Julian offered his own personal thoughts about Marty and Julian’s daughter Stella, one of Marty’s nieces, read a poem she had written. Cath then delivered what was the most beautiful and moving eulogy I have ever heard. The Bible text at the heart of this was from Psalm 139 “I praise you because I am fearfully and wonderfully made”. 

I could not help but contrast with the thinking behind East Kent NHS trust and Richard Dawkins' tweet.

It is not my intention here to engage in ethical debate about this issue, nor to pass judgement on anyone who has been faced with this very difficult issue and choice about whether to go through with the pregnancy of a fetus with Down's syndrome. When Marty was born, back in 1959 there was no choice and yes looking after Marty brought with it many challenges. His mother especially fought tooth and nail to give Marty the best possible care and his parents were in the fortunate position to invest in his future as part of a privately run community near Folkestone, Thorndene, although it was a financial sacrifice to do so. Thorndene became Marty's true home and family and remains an extraordinary place filled with extraordinary love. However I am deeply troubled that as a society we are increasingly seeing evidence of the sort of thinking that the NHS Trust and Richard Dawkins have displayed. I happen to believe that a society is to be judged on its treatment of its most vulnerable members. I know this has big resource implications which seem to be increasingly at odds with our present direction of travel. The danger though is that Marty, and those like him will increasingly be seen to have little to contribute, that they will be a drain on resources. My fear is that the default position will be to prevent by "choice" such people being born. I think everyone should spend time in places such as Thorndene and there they will see what the face of love really looks like. As an 'outsider' to his family I learnt so much from Marty and will always consider it a privilege to have had him as my brother in Law. He was fearfully and wonderfully made indeed.

*Simon*

## **Lent**

Lent is nearly upon us. Please see details about services that will be taking place, notably our Ash Wednesday service in Great Milton and evening complin services. In March we will also hosting Lent bread and soup lunches around the Benefice to raise money for Christian Aid. These will be held on three Fridays in March, 12.00 - 2.00. Friday 4th, Northend Cottage, Lower End Great Milton (Jane and Tony Jefferis). Friday 11th Old School House, Backway, Great Haseley (Anne Maloney) Friday 18th Briarwood, Haseley Road, Little Milton (Jane Willis).

---

## Great Milton Methodist Church Services

For further info. please contact Rev Adam Stevenson on 01491 613223

February				
Date	Time	Church	Preacher	Detail
7th	11:00am	Gt. Milton	Simon Pillinger	
14th	11:00am	Gt. Milton	Adam Stevenson	Holy Communion
21st	11:00am	Gt. Milton	Sue Barratt	
28th	11:00am	Gt. Milton	Simeon Mitchell	

---

## The Friends of Great Milton School '100 Club'

Here is a list of all the recent prize winners of the FOGMS 100 Club – many congratulations to you all!

17 November	No 65	Ailsa Richards
24 November	No 2	Phil Styles
1 December	No 31	Mrs J Jaunet
8 December	No 80	Mrs J Jewell
15 December	No 92	David Speirs
22 December	No 82	Emily Johns
29 December	No 91	Rachel Forsyth
5 January	No 24	Strout family

Many thanks to all those who support this school fundraiser.

A big thank you to Ann Price for all her help in co-ordinating the draw at the Neighbours Hall and Christine Donnelly for her invaluable helps with the prizes.

Keep Lucky!

*Miranda Cook, 100 Club Co-ordinator*

---

## Senior Citizen's Party Fund Committee

### Quiz

Yet another successful quiz evening, with 9 teams participating resulting in £326.00 being realised – a considerable boost to our funds.

Our thanks to you all, with special thanks to Paul Dennis for acting as Quizmaster.

Congratulations to Carina Martin and her team for winning – a very close call with the second placed team just a point behind.

### Christmas Cake Raffle Prizewinners List

Prize	No.	Winner	Sold at:
1. Cake	502	Paul Simms	The Bull
2. Bottle Champagne	682	Jamie	The Bull
3. Box Biscuits	667	Jamie	The Bull
4. Bottle Gin	617	John & Debby	The Bull
5. 4 Lagers	593	Togys	The Bull
6. White Wine	655	Jamie	The Bull
7. 4 Ciders	563	R. Keal	The Bull
8. Body Shop Toiletries	405	S. Preston	The Shop
9. Box Soaps	786	L.S.D.	The Bull
10. 'Reindeer' Hot Water Bottle	121	J. Simms	The Shop
11. Candle	116	I. Melton	The Shop
12. Tin Choc Wafer Rolls	261	Barbara	The Shop
13. Tea Towel	220	S. Rose	The Shop
14. Dairy Box Chocs	827	C. Simmonds	The Bull
15. Terry's Chocs	860	C. Tite	The Bull
16. Pose Wine	450	Chris	The Bull
17. Photo Album	538	Doug	The Bull
18. Bottle Ginger Wine	426	Doug	The Bull

Thank you for your support. £91.35 raised for the Senior Citizens Annual Party Fund.

---

*The Editor would like to apologize to Ann Price and all concerned for failing to include the Senior Citizen's Party Fund Committee and Cricket Club articles in the January edition of The Bulletin.*



## Great Milton Cricket Club

The club recently held it's presentation night at The Bull, with the following members being presented with trophies for the 2015 season:

Batting	Steve Webb
Bowling	Ali Noble
Most 6s	Steve Webb
Most Catches	Ali Noble, Nick Harris and Jamie Bates
Most Ducks	Jake Barton
Players' Player of the Year	Ali Noble
Fielder of the Year	Jamie Bates
Supporter of the Year	Ann Price

Members kindly gave very attractive bouquets to Lucy Darch and Anna Dennis for their services a tea ladies, and myself for my scoring duties.

The evening concluded with a tasty buffet provided by Doug and his staff.

*Ann Price, Secretary*

---

## Rainfall at Coombe Farm for 12 Months 2015

	Rain fell:	mm	inches
Jan	19 days	53.5	2.10
Feb	21 days	45.5	1.79
Mar	8 days	19	0.74
Apr	5 days	26	1.02
May	10 days	53.5	2.10
Jun	4 days	13	0.51
Jul	7 days	58	2.28
Aug	11 days	47.5	1.87
Sep	8 days	49.5	1.94
Oct	7 days	31	1.22
Nov	17 days	71.5	1.81
Dec	13 days	48.5	1.90

Total for the year: 516.5 mm, 20.33 inches. July 25th was the wettest day with 35 mm. Compare with 2014: 727 mm, 28.62 inches. Compare with 2013: 576 mm, 22.67 inches.

# The Tale of Mr Goodenough, The Rat, The Fire, His Coat and The Cheese Sandwich

## The Three Pigeons prior to 1892

The earliest image of The Three Pigeons at Milton Common yet found is this extraordinary photograph. It must date to before 1892 (for reasons given below) and we suspect it may be as early as the 1870's. In the shot, the highway can be seen extending towards Oxford on the left (the A40) and two women and a child stand watching the photographer at the doorway. The Inn comprises two halves. On the right, a thatched cottage – no longer with us - probably dating back to before the 17th Century. A deep porch – lined with benches either side is noticeable and would have been a feature offering shelter to any traveller day or night. Either way, it would be a great spot to sit, have a pipe and a flagon of ale on a sunny lunchtime and admire the view. (Before the M40 motorway came through – changing the junction and embanking the A40 – we think that there would have been a panoramic view from The Three Pigeons – across the common to the Haseley Windmill and the Wittenham Clumps beyond). We may have a surviving original wall of this thatched building incorporated in our current kitchen. The cottage has been enlarged with what looks, at the time of the photograph, to be a fairly new and sizable extension, on the left. It is stone-built under a tiled roof with dressed quoins to the corners and with double hung sash windows – this still stands, albeit pebble-dashed.

We have now discovered what happened to the old thatched inn after finding a newspaper article in The Bucks Herald dating to 4th June 1892. The then Landlord, Mr Goodenough, had a mis-hap with his shotgun. It reads as follows (para breaks added):

*“FIRE AT THE THREE PIGEONS. – The well-known road-side hostelry, familiar alike to the old stage-coach traveller and the modern cyclist, the centre of many a merry-making and old time incident, known as the Three Pigeons, situated on Milton Common, the junction of the London and Wallingford roads, about 1.5 miles from Great Milton, Great Horsley (sic.), and Tiddington, was on Monday night the scene of a conflagration which resulted in considerable damage to property, and great inconvenience to the occupants.*

*The house consists of a well-built modern portion and a low thatched part – the remains of the original structure – and the fire appears to have been occasioned in the latter half by a somewhat curious and unusual cause, viz., the discharge of a breech-loading gun at a rat on the roof, by the proprietor of the inn, Mr. J. Goodenough, in the evening. When it was discovered that the thatch had caught fire, an alarm was raised and*

*the inhabitants of the few scattered houses in the vicinity hurried to the spot and assisted in removing the goods from the house into the road. A messenger galloped to Thame for the Fire Brigade, and in the meantime the occupants of the house, assisted by their neighbours, made good use of the pump and buckets.*

*The news of the fire reached Thame about 9.30, and in about 40 minutes time a full muster of the Brigade with their engine was on the spot, quickly followed by P.S. Ayres and others in various vehicles. When the Brigade arrived they found that the fire existed only in the thatch and that the major portion of the furniture, stock-in-trade &c., was out of danger. Locating the engine at a pond, situated in a field at the back, they ran out a good length of hose, and directed their efforts to preventing the flames from reaching the new part of the house. The firemen carried out their operations with a despatch and precision which was very creditable to their new captain Mr George Bailey, who took the command for the first time. They applied water to the thatch adjoining the western section of the house until the flames were got under sufficiently to enable them to drag down the straw and cut away the woodwork. This was successfully accomplished, and the principal portion was practically out of danger.*

*After a time, however, the water supply began to fail, and the fire in the thatch gained on the firemen, until a large portion of the burning mass slid off. About one o'clock the roof fell in, and the inside of the house was filled with smoke and flame. The wind now began to rise, and the smoke ascended in dense clouds; at intervals, broad sheets of lightning burst forth, and momentarily threw a brilliant light on the scene of the conflagration. The thatched roof was completely burnt away, and the interior of the house sustained much damage before the flames were fully extinguished, which was not till between three and four o'clock, when the brigade quitted the spot.*

*Mr Goodenough's family were kindly accommodated at their neighbours', and the work of clearing the refuse and straightening the premises was proceeded with apace on Tuesday morning. It is supposed that the wad of the burnt cartridge was the cause of the fire."*

What a night.

Mr Goodenough's tribulations didn't end there though. He and his family seem to have moved back into the new building in lieu of the collapsed burnt half being re-built. Four lads from East London were passing one night in the July and broke-in, thinking that the boarded up ruin was deserted. They stole a couple of coats and some bread and cheese. The incensed Goodenough having heard a noise downstairs, hurriedly harnessed up his horse and set off in pursuit towards Oxford but didn't find them. So he galloped back past his pub towards London, raised some help in Tetsworth, and before getting to Postcombe caught up with the four rogues, sauntering along in rather familiar looking coats. Goodenough had had enough. The boys were up



before the beak in Oxford the following day and took their three-week jail sentence...

“with a light and careless manner, and afterwards, with Mr Goodenough’s permission, feasted on the remainder of the ill-gotten eatables” *Oxford Journal* 23rd July 1892

### **The Three Pigeons, Milton Common in the early 20th Century**

The Three Pigeons was eventually re-built largely as it stands today, the replacement eastern half, adding a second gable to the frontage to match the first, the replacement built in brick.

The Coffeeshop at LASSCO Three Pigeons is now back in the hands of the LASSCO team with a return to our original Coffeeshop concept... Kim serves great coffee, brunch, lunch, tea and cake Monday to Saturday 9am-3pm – local beers and wine available at lunch. (Evening dining will return by March with news that the incoming chef comes with a Michelin star – watch this space!). Tel: 01844 277185

---

## **Little Milton WI**

In January we had a lovely New Year dinner at The Plough in Great Haseley. Thank you to Steve for a wonderful spread, to Deirdre for helping to organise us all and to Mary for an entertaining quiz.

Our next meeting is on 11th February (speaker to be confirmed).

Do you live in Little Milton, Great Milton or The Haseleys, want to meet new people, make new friends? Then join Little Milton WI and meet like-minded, local women of all ages in an informal, friendly group. Visitors welcome, only £3.

No need to be shy, contact me for more information.

We meet every 2nd Thursday of the month at the Pine Lodge at 7.30pm.

Annual membership (£37.50) includes 12 meetings per year with refreshments, 10 Oxfordshire newsletters, 8 National magazines called WI Life, organised outings and discounted courses at Denman college.

Keep up to date with WI news & events at [www.facebook.com/lmpinelodge](http://www.facebook.com/lmpinelodge) See our programme for 2015/16 at [www.littlemilton.org.uk/womensinstitute](http://www.littlemilton.org.uk/womensinstitute)

*Kath Stacey 279438*

---

## **New Health Information Website for Oxfordshire**

Visit [www.my-coach.org.uk](http://www.my-coach.org.uk)

COACH offers patients healthcare support, local information and signposting in four key areas; Health Services, Support and Advice with a symptom checker, Wellbeing and Health Conditions drawing information from NHS Choices, Oxfordshire County Council and local voluntary and support groups. In a unique approach COACH will include a developing directory to enable users to find details on local services, clubs and support groups and combine these results with the best available online health and wellbeing groups.

COACH allows users to self-care by choosing the right service or using the symptom checker, while under the comprehensive health services section they can look up their nearest pharmacies, Dentists, GPs and opticians, or find out about other local services – for example advice on maternity, child, young adult or elderly care – ensuring the patient receives both accurate and appropriate information.

The Health Conditions section gives users tips on avoiding ill health, including details on available screening programmes and immunisations, living with long-term conditions and accessing clinical information using the Health A-Z guide.

---

---

## **John Howell MP**

### **Mid-January 2016**

The question of what an MP does is obvious to some but less so to many. I am often asked about the role of an MP or to speak to groups on what I do. There is no job description for an MP but rather some key roles they are expected to play. The main role is to review legislation and represent local interests in Parliament. During the course of a week MPs divide their time in Westminster between scrutinising legislation, attending debates, committees and a wide range of briefings and other meetings. In doing so an MP will hold the national interest at heart and ensure that the interests of their own area are represented in this bigger picture. By and large a MPs time is divided between working in Parliament or representing parliament elsewhere and working in their constituency.

Beyond this overall description it is down to each MP to work it out in practice. When Parliament is sitting MPs are expected to be in Westminster from Monday to Thursday

and so time in the constituency is limited. Outside of sitting weeks there is more time for constituency meetings and visits. A key constituency time for me is the September recess when I try to do a tour of villages. This is the only recess that does not coincide with school holidays and so many more people are available than in other recesses.

When in Westminster there are many different issues that I would like to speak on but to some extent we are dependent on being called by the Speaker to make a contribution to a particular debate. In some debates contributions are time limited to give more MPs a chance to speak. The website 'theyworkforyou.com' records the activities of all MPs. According to their data I have been included in the top 100 backbenchers for speaking in the House of Commons. I rank 100 in the House after excluding frontbenchers on both sides and the speaker and deputy speakers. Since the General Election in May I have spoken on a number of subjects including schools funding, human rights in Egypt, refugees, aircraft noise over Henley, NHS and social care integration, Operation Bullfinch in Oxford, prison reform, dangerous driving, business rates, the BBC, mental health and children, Junior doctors, the Middle East, Right to Buy, grammar schools, lead shot, unemployment in the constituency, the role of Henley College, and the work of Network Rail in the constituency.

There are many issues that I raise in Parliament and it is always essential to choose the best way of doing so to get the desired action or response. Some issues are best raised directly with Ministers. Other issues can, where appropriate, be raised on the floor of the House. At others times I ask questions of Ministers either in the Chamber or in writing.

When in the constituency I attend events and meetings. Since the General Election I have attended some 148 meetings and events in the constituency. I also hold advice surgeries which provide an opportunity for constituents to raise specific issues with me. However, like many MPs I find that many people now prefer to use email or to phone my office if they have a problem. This way they can get a quicker response than if they had to wait for the next available surgery appointment. Geography also plays a part in this. With the geographical spread of this constituency distance can be a problem so the use of technology is great help. Generally speaking the individual issues that I may be able to help with relate to Government departments. Concerns with local council services are best raised with local councillors.

I am always pleased to know what is going on around the constituency and glad



to receive copies of the many village magazines. I welcome constructive debate with constituents on a range of issues in person, by letter or email. However it is impossible for me to represent all of the different views inevitably expressed on different issues by people from across the constituency. In the end every MP has to make a judgement on what they say and how they vote on particular issues.

I send out a regular general e-newsletter and also special briefings on an occasional basis on specific issues. If you would like to be on my circulation list for these bulletins please email me at [john.howell@oxfordshireconservatives.com](mailto:john.howell@oxfordshireconservatives.com). For more information about my work both in Westminster and in the constituency please do visit my website which is regularly updated. The address is [www.johnhowellmp.com](http://www.johnhowellmp.com). You can also follow me on twitter @johnhowellmp or on Facebook [www.facebook.com/john.howellmp](http://www.facebook.com/john.howellmp)

I look forward to hearing from you as the year progresses.

---

## Great Milton Website

Have you seen the website?

**<http://www.great-milton.co.uk/>**

It is important to keep it up to date so please could you advise Carina Martin of any updates that need to be made ([carina.martin@gmail.com](mailto:carina.martin@gmail.com))

### **The Three Villages Car service**

exists to help people who are having difficulty in getting to their doctors' appointments. For those who are unable to drive, get a bus, or get a lift with family or friends, we will, if able, take you to the doctors surgery or to appointments at Thame Hospital. For appointments at the main Oxford hospitals, we suggest you ask for the Hospital Transport services.

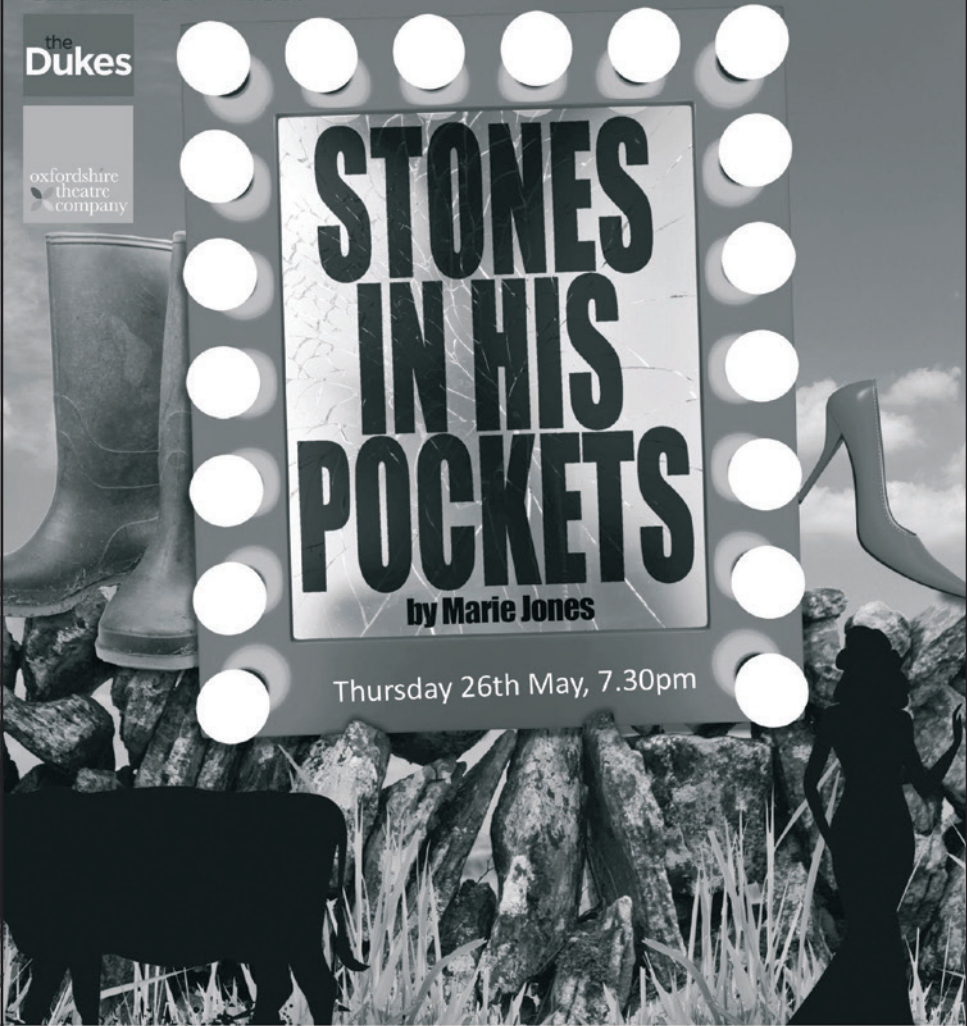
If you need our help, please phone **Jane Jefferis – 01844 278743 or Wendy Richardson – 01844 278479.**

We are also seeking some others to join the small band of volunteer drivers. If you are able to help in this way, Jane or Wendy would love to hear from you.

THE THEATRE  
CHIPPING NORTON

the  
Dukes

oxfordshire  
theatre  
company



# STONES IN HIS POCKETS

by Marie Jones

Thursday 26th May, 7.30pm

THE NEIGHBOURS' HALL, GREAT MILTON

Thurs 26th May, 7.45pm

**Tickets: £10 / £8 concs / £20 family ticket**

Tickets: 01844 279474 | [www.wegotickets.com](http://www.wegotickets.com)

The Neighbours' Hall, Church Road, Great Milton OX44 7NZ

# LASSCO

THREE PIGEONS

Shop Open  
Mon to Sat, 9am-5pm

---

## *Architectural Salvage*

---

Coffeeshop  
9am-3pm

MILTON COMMON OX9 2JN

Brunch Lunch Tea Coffee Wine Beer

TEL: 01844 277188 • [www.lassco.co.uk](http://www.lassco.co.uk)

*At the Pine Lodge, Little Milton*

## **CRAFT CLUB**

Every 3rd Wednesday of the month

**17th February**

**7:30 – 10pm**

**All crafts and crafters welcome**

£2 per session

---

## **CINEMA CLUB**

Every 3rd Thursday of the month

**18th February 8pm**

Enjoy a film on the big screen, without the  
hassle & cost of going to the cinema

**Plus licenced bar**

For news and photos visit us at:  
**[www.facebook.com/Impinelodge](http://www.facebook.com/Impinelodge)**

Want a fun night out in Little Milton?  
Come and try our village

## **Quiz Night**

**SATURDAY**

**5th MARCH**

7pm @ The Pine Lodge

Ticket includes 2-course dinner

**Licensed bar serving:**

Excellent local ale

Wine supplied by Little Milton shop

Corkage £2 per bottle

Everyone welcome!

On your own or in a team

Tickets on sale at LM Post Office: £8  
**[www.facebook.com/Impinelodge](http://www.facebook.com/Impinelodge)**



# JSC Fun Clubs

Key stage 1 & 2 Junior Sports & Fun Activities  
for children aged 8-13 Years & "GMSS" members

**Programmes running each school holiday**

**Activities include: Dance & Music | Table Tennis | Fitness Fun | Football  
Basketball | Skating | Cake Decorating | Arts & Crafts | and more!**

### **Venue**

Great Milton Recreation Ground, Oxfordshire, OX44 7NF

**Twitter:** jsc4kidscom ~ **Tel:** 079 3131 5450 ~ **Email:** [jsc@jsc4kids.com](mailto:jsc@jsc4kids.com)

**Facebook:** JSC Fun Clubs

**Website:** [www.jsc4kids.com](http://www.jsc4kids.com)

## BULLETIN ADVERTISING

The Bulletin is produced 11 times per year and 470 copies are distributed. Advertising rates are as follows:

**1/4 page (w62mm x h90mm) £5 or £50 per year**

**1/2 page (w128mm x h90mm) £10 or £100 per year**

**Full page (w128mm x h185mm) £20 or £200 per year**

**• Full back page colour £35 or £350 per year •**

Adverts for community or fund-raising events can have quarter page free. Larger sizes are charged at half the normal rate.

Please contact Helen Cherry

Tel: 07554 516989

Email: [contact@clerkgreatmilton.co.uk](mailto:contact@clerkgreatmilton.co.uk)

21 Fullers Field, Great Milton, Oxford OX44 7PJ

All payments must be settled in advance. Please make cheques payable to "Great Milton Parish Council"

### Neighbours Hall

**A large, pleasantly decorated and well heated community hall with well equipped kitchen and ample parking – ideal for community groups, children's parties, family get togethers, company functions, corporate training, weddings etc available for hire by the hour or the day.**

Free use of tables, chairs and kitchen equipment

£10 per hour, £50 per ½ day, £100 per day

For more details please contact:  
Secretary, Ann Price 01844 279 474

### Need a venue? The Pavilion & Recreation Ground

**Ideal for children's parties, meetings, family get togethers, classes and lessons, corporate days and sports events.**

**Table and chair hire also available**

**For booking and more info,  
call 01844 278116**

**Wheatley Dental Practice**  
**01865 873314**

We are currently accepting new patients at our friendly local dental surgery.  
Please phone our receptionists or call in for more details!  
Tooth whitening and facial aesthetic treatments available.

**Catherine Peers BDS, Alison Chapman BDS MFDS RCS**  
**Jessica Jefferis BDS MFDS RCS, Carolyn Wright RDH**

96 Church Road, Wheatley, OX33 1LZ  
[wheatleydental@kdsconnect.com](mailto:wheatleydental@kdsconnect.com)



*Providing exceptional customer service since 1974*

**MOTs : TYRES : SERVICES : REPAIRS**

**LOAN CARS : LIFTS & COLLECTIONS**

**01844 278177**

Unit 15, Camp Industrial Estate, Milton Common, Oxon, OX9 2NP





# THE ORCHARD PRE-SCHOOL LITTLE MILTON

We offer a high quality pre-school education for 2 to 5 year olds based on the Early Years Foundation Stage areas of learning and personal development, with special sessions offered for 4 and 5 year olds to prepare them for primary school.

Our team of dedicated and caring staff ensure each child receives the individual attention he or she needs in order to develop intellectually and socially throughout their time with us.

Ofsted report 2015 – *"The staff create a welcoming and supportive environment where the children feel valued."*

**[www.theorchardpreschool.co.uk](http://www.theorchardpreschool.co.uk)**

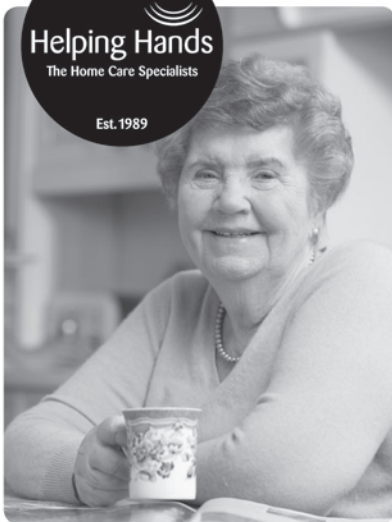
**01844 279 989 [enquiries@theorchardpreschool.co.uk](mailto:enquiries@theorchardpreschool.co.uk)**

- Ofsted rating 2015 – Good with Outstanding for Children's wellbeing ● Purpose built premises
- Outdoor garden and play area ●
- IT facilities ● Book lending library ● Disabled access and facilities ●

Charity number 1028227

**Helping Hands**  
The Home Care Specialists

Est. 1989



## Do you need a Helping Hand?

If you are looking for an **alternative to residential care** or extra support for those everyday tasks that are becoming difficult for you or a loved one – then we're here to help - **from 30 minutes per week to Live-in Care.**

Our **Great Milton care team** has been providing award winning quality homework since 1989 and can help with: personal care, housekeeping, help getting around or even to provide a break to an existing family member or care-giver.



To find out how we can help you,  
call: 01869 722 736 or  
visit: [www.helpinghands.co.uk](http://www.helpinghands.co.uk)

# TIDDINGTON GARAGE

TEL: 01844 339210

**SERVICING ALL MAKES AND MODELS**

**MOT'S WHILE YOU WAIT**

**FREE COLLECTION AND DELIVERY**

**COURTESY CARS AVAILABLE**

**SPECIAL DEALS ON SERVICE AND MOT**

**TYRES & LASER TRACKING AVAILABLE**

**DIAGNOSTICS**

the  
**Good Garage Scheme** 

**OPENING TIMES MON-FRI 7.30AM-6PM**

**NOW OPEN SATURDAYS 8AM-1PM**



## [www.OxfordAutoGas.com](http://www.OxfordAutoGas.com)

**SAVE UP TO**

# 40%

**On your Fuel Costs and Reduce Harmful Emissions**

“ Did you know that you can have an additional fuel system  
fitted to your petrol car allowing you to fill up for  
**half the price** of petrol? ”

Call today for your **free consultation** to see how much you  
can save by having your petrol car converted

**OXFORD ROAD,  
TIDDINGTON,  
OX9 2LH.**

**tel: 01844 339210**

**mob: 07973 442617**

**MEMBER OF THE GOOD GARAGE SCHEME**





## Premier Architectural Joinery

**FENSA**



Premier Architectural  
Joinery Limited  
Ladymead Farm  
Quainton  
Aylesbury  
Buckinghamshire  
HP22 4AN

Tel - 01296 655555 Opt. 6  
Email - [u2us@premieraj.co.uk](mailto:u2us@premieraj.co.uk)

**Bespoke Architectural Joinery for Period Listed and Contemporary Buildings**



Windows



Staircases



Doors



Roof Lanterns



Gates



Conservatories



Furniture



Bi-Fold & French Doors

**[www.premierarchitecturaljoinery.co.uk](http://www.premierarchitecturaljoinery.co.uk)**



BOOK A COOK

*Private cooks, chefs and couples for all occasions, from one-off events to full-time placements.*

M | 07710 122428

W | [www.bookacook.com](http://www.bookacook.com)

E | [sasha@bookacook.com](mailto:sasha@bookacook.com)

# computer problems ?

## call THE WINDOWS CLEANERS

A HOME SERVICE FOR YOUR PERSONAL COMPUTER

system upgrades • virus removals  
performance improvements  
internet solutions

for a speedy, jargon-free appointment:

**07947 700746**  
**01296 748980**

10% off  
Xmas Trees  
with this ad

 **Waterperry**  
Gardens

## Get the festive season off to a flying start with gift ideas galore at Waterperry.

Visit the **Gallery** and **Gift Barn** for unique gifts for all the family and our **Christmas Shop** for everything you need for the tree.

Pick up a Waterperry-grown Christmas tree and handmade wreath from the **Garden Shop** and fill up on fabulous festive food at our **Teashop**.

Don't miss our **Christmas Markets 14th & 15th November** and **12th & 13th December 10.30am – 4pm** and **Find Santa's Reindeer 14th November – 3rd January**.

Eight acres of inspirational gardens steeped in horticultural history. Open everyday 10am till 5pm. **Christmas Opening 27th to 30th Dec 10am to 4pm**. Closed Christmas Day, Boxing Day, 31st Dec and 1st Jan.

[www.waterperrygardens.co.uk](http://www.waterperrygardens.co.uk)

or tel. 01844 339254

Waterperry, Near Wheatley, Oxford OX33 1JZ

twitter

Find us on  
Facebook

## Waterperry Gardens January Events

A place to explore, relax and shop in beautiful surroundings all year round.

### Alphabet I Spy

**13th – 21st February**

Family fun over the February half term with Alphabet 'I spy' in the gardens. Spy the whole alphabet and win a seasonal Waterperry prize! £2 per child - children must be accompanied by an adult for whom the garden fee applies.

### Snowdrop Weekends

**20th & 21st and 27th & 28th February**

With more than 60 different snowdrop varieties carpeting the ornamental gardens and a spectacular snowdrop valley area, there's no better place to enjoy these little heralds of spring in such a magical setting.

Don't miss free guided tours at 11am, 12.30pm and 2.30pm each day of our special snowdrop weekends (Garden entrance fee applies).

### Pancake Day

**Tuesday 9th February**

Make the most of the last day before Lent by enjoying one of our pancakes in the Teashop at Waterperry - then why not walk it off with a brisk stroll around the gardens?

Gardens Teashop Garden Shop  
Gallery Gift Barn Museum Courses

## Thame Therapy Clinic

www.thametherapyclinic.co.uk  
info@thametherapyclinic.co.uk

23 Upper High Street  
Thame OX9 3EX  
01844 261592  
or 215555



### Range of treatments we can offer you

Osteopathy • Acupuncture & Chinese Herbal Patents • Cranial Osteopathy  
• Homeopathy • Physiotherapy • Reflexology • Japanese Acupressure &  
Seitei Body Therapy • Aromatherapy Massage • Holistic Massage • Indian  
Head Massage • Hot Stone Massage • Relationship & Psychosexual  
Counselling • Speech and Language Therapy • Zero Balancing

## C.S. Putt Gardening Services



HEDGE CUTTING, WEEDING, CLEARANCE, FENCING

TURFING, TIDYUPS, GRASS CUTTING &

STONE WALLING UNDERTAKEN

FOR A FAST FREE FREINDLY QUOTE CALL ME TODAY ON

(01844) 278 122 OR 07703 004 984

## Mrs Georgia Turner

### Specialist Podiatrist

MChS, Bsc Hons, HPC registered

'Keeping you on your feet'



Almost 20 years experience in the NHS and private sector. Specialist assessment, treatment and management of all aspects of foot health.

Special interests include Children's foot health, Biomechanics and Diabetic foot care.



www.hpc-uk.org

Tel: 07986 290953

oxfordpodiatry@gmail.com

## Rob Hawes

Painting and Decorating  
Finished to a High Standard  
All Aspects Undertaken

Phone

01844 213358

07729 881306



# A & A MOTORCYCLE ENGINEERING

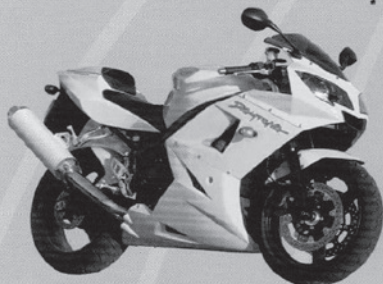
**£15 MOT**

(when combined  
with a service)

Quote Ref:HM

MOT's, SERVICING and REPAIRS to all Makes  
of Motorcycles and Scooters

MECHANICAL and ELECTRICAL FAULT DIAGNOSIS



**MOT  
£20**



**01865 876558**

Unit 4, Littleworth Industrial Estate, Wheatley OX33 1TZ

# A & A AUTOS

MOT's, SERVICING and REPAIRS on DIESELS and PETROLS

ENGINE MANAGEMENT DIAGNOSIS

SPECIALISTS in HONDA, TVR and MG

FREE AIR CONDITIONING SYSTEM CHECK



**MOT  
£44.85**

**SAVE £15**

on the cost of your

**MOT**

(when combined  
with a service)

Please quote Ref: HM

WWW.A-AND-A-AUTOS.COM

**01865 874090**

Unit 5, Littleworth Industrial Estate, Wheatley OX33 1TZ



BRIAN MAWBY

PAINTING AND DECORATING

EST. 1969

PROFESSIONAL QUALITY

INTERIOR AND EXTERIOR PAINTING

FOR YOUR FREE QUOTATION

PHONE: 01844 260831

MOBILE: 07909 738971

**ASHURST ARCHIVES**

## STORAGE

- Archive and Documents
- General Household
- Car
- Boat
- Caravan
- Business
- Short or long term

**ASHURST COURT  
WHEATLEY**

**jonnie@hollandsfarm.com**  
**01844 278332**  
**07768 408389**



# Bucks Wigwams

Est. 1969

## Pavilions and Marquees

for Parties, Weddings, Charity Balls, Luncheons etc.

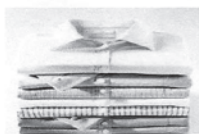
Please call us on **01844 278 736**  
**[www.buckswigwams.co.uk](http://www.buckswigwams.co.uk)**

*Free site visit and party planning advice*

Our aim is to work within your budget

From 5 to 500 guests, we have one of the largest local stocks

**Quality    ~ ~    Local    ~ ~    Service**



## Spick & Span Domestic Ironing Services

We iron everything, from bedding to underwear! We provide weekly, fortnightly, monthly and ad hoc collections to suit you. We will pick up from your home at the time you requested. Your ironing will be carried out in a clean, smoke-free environment. Your ironing will be hung or folded as requested. Our standards are very high. We check all loads before returning to the you. Our driver will then return your ironing to you at a pre-arranged timewithin 2 working days from initial pickup

Telephone 07748330359 | Email [spicspandomestic@outlook.com](mailto:spicspandomestic@outlook.com)

## PROFESSIONAL CARPET and HARD FLOOR CLEANING

Domestic and commercial  
services

Local and Fully Insured  
owner and operator

07411606609

01865580879



LEADING THE WAY IN DOG TRAINING TODAY FOR A  
POSITIVE LEARNING EXPERIENCE FOR YOUR DOG AND YOU

### CLASSES AND TRAINING FOR:

PUPPIES

ADULT DOGS

ONE TO ONE

AGILITY

CLICKER TRAINING

OUTSIDE RECALL



For more information contact

Jeff on 07944805916

Email: [scallywagsdogtraining@gmail.com](mailto:scallywagsdogtraining@gmail.com)

[www.scallywags-dog-training.co.uk](http://www.scallywags-dog-training.co.uk)

Puppy classes Tetsworth Memorial Hall Thursday evenings

Puppy Romp held in Thame on Tuesday mornings

## Great Milton Toddler and Baby Group



Come along and join us for a coffee and a  
chat whilst your children play.

We are a small, friendly group open to all  
Mums, Dads and Carers in the local area.

We have lots of toys for all ages to enjoy in  
a relaxed and welcoming environment.

Great Milton Village Hall

Friday 9:30 to 11.30

For more information contact:

Hayley on 01844 279016



# Windmill Windows

Est 1999

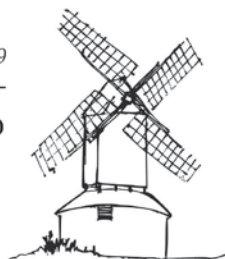
[www.windmillwindows.com](http://www.windmillwindows.com) / Tel: 01844 237070

"Windmill Windows is a local family run business established in 1999, supplying and installing a large range of products in all materials, including uPVC, Composite, Timber and Aluminium.

Please feel free to pop in to see us, call us or visit our website for any information you are after. All our quotes are free of charge and obligation free."

Address:

Unit 1,  
68 Worminghall Rd  
Oakley, Bucks  
HP18 9QY



Products:

- \*Windows
- \*Doors
- \*Bi-Folds & Patio Sliders
- \*Conservatories
- \*Fascia / Soffit & Guttering
- \*Glazing

OXFORDSHIRE & BUCKINGHAMSHIRE

## ALL SEASONS TREE CARE

Specialists In Tree Care & Garden Management

- Felling • Reductions & Thinning
- Crown Cleaning • Tree & Scrub Clearance
- Hedge Trimming • Stump Grinding • Logs

Domestic & Commercial

EMERGENCY 24 HOUR SERVICE

FREE No Obligation Quotes

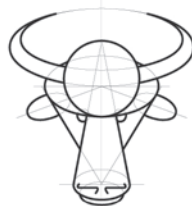
5 Million Public Liability NPTC & Lantra Qualified

[www.allseasonstrees.com](http://www.allseasonstrees.com)

Mob: 07823 332 247

Tel: 01865 430 536

Tel: 01869 250 473



**J.M. DUDLEY**  
GRAPHIC SERVICES

Artwork Creation  
Photo Retouching  
Colour Printing  
Photocopying  
Scanning

**01844 279761 07721 457035**  
**JONNY@ORODRUIN.CO.UK**

## Diary

- Monday Fitness & Yoga – The Neighbours Hall. 7:30pm – 8:45pm  
*contact Yvonne Cartwright – 01844 279205*
- Tuesday Bingo – Neighbours Hall. 7:45pm *contact Ann Price – 01844 279474*
- Wednesday History Room Open at The Bull. 11:30am – 1:00pm  
Fitness & Yoga – The Neighbours Hall. 6:00pm – 7:15pm  
Athletics Club Training. Year 9-4. Evening. *enquiries.gmac@gmail.com*
- Thursday The Neighbours Club. Alternate Thursdays.  
*contact Janet Earl – 01844 279432*  
Sandy Lane Farm Market. 2:00pm – 6:30pm.  
*contact Sandy Lane Farm – 01844 279269 www.sandylanefarm.net*  
Badminton – Great Milton School Hall. 7:00pm – 10:00pm  
*contact Daphne Holland – 01844 214198*  
Bellringers – St. Mary's Church Tower. 7:30pm – 9:00pm  
*contact Pat Cox – 01844 279300. www.gm-bellringers.freeuk.com*
- Friday Toddler & Baby Group – The Neighbours Hall. 9:30am – 11:30am  
*For more information contact Olivia – oliviajhill@hotmail.com*
- Saturday Athletics Club Training. Year 9-4. Morning. *enquiries.gmac@gmail.com*  
Junior Sports – Recreation Ground. 5–11 years 10:00am – 12:00pm  
*contact Tash Groves – 01844 279637*  
Old Field: 2nd Saturday of each month. 10:15am – 12:00pm.  
*Contact Alex Kirkman – 01844 278090*  
Bingo – Neighbours Hall. 7:45pm *contact David Spiers – 01844 218345*

## February

- |      |      |   |        |
|------|------|---|--------|
| 11th | Thur | Little Milton W.I. Meeting at The Pine Lodge, Little Milton | 7:30pm |
| 15th | Mon  | Parish Council Meeting at The Pavilion                      | 7:30pm |
| 17th | Wed  | Craft Club at The Pine Lodge, Little Milton                 | 7:30pm |
| 18th | Thur | Cinema Club at The Pine Lodge, Little Milton                | 8:00pm |

## March

- |     |     |   |        |
|-----|-----|---|--------|
| 5th | Sat | Quiz Night at The Pine Lodge, Little Milton | 7:00pm |
|-----|-----|---|--------|

## May

- |      |      |   |        |
|------|------|---|--------|
| 26th | Thur | 'Stones in His Pockets' by Marie Jones at the Neighbours Hall | 7:45pm |
|------|------|---|--------|

All copy (except adverts) to **gmbulletin@hotmail.co.uk** by **20th February 2016**.

Adverts to **Helen Cherry** 21 Fullers Field, Great Milton, Oxford OX44 7PJ.

07554 516989 • **contact@clerkgreatmilton.co.uk**

Paper copy to **Jonathan Dudley**

Sheppard Cottage, Lychgate Lane, Great Milton, Oxford OX44 7PB.

The views expressed in this bulletin are not necessarily those of the Editor nor of the Parish Council.  
The Editor reserves the right not to print items submitted for publication, and to edit those which are published.